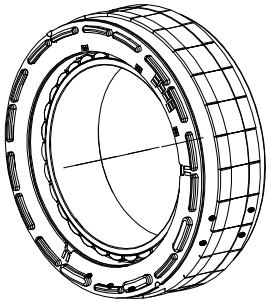
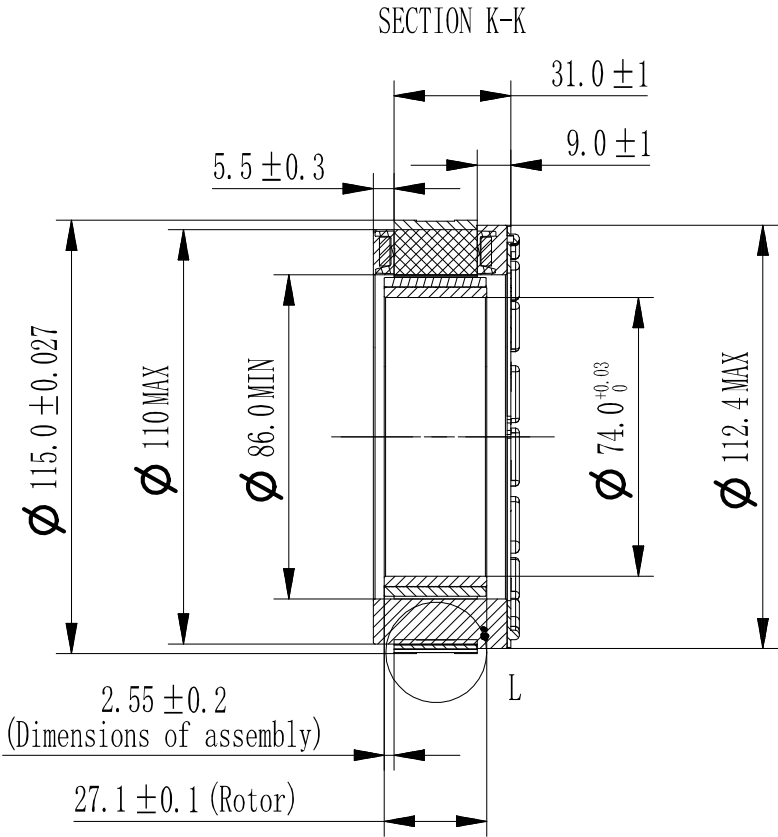
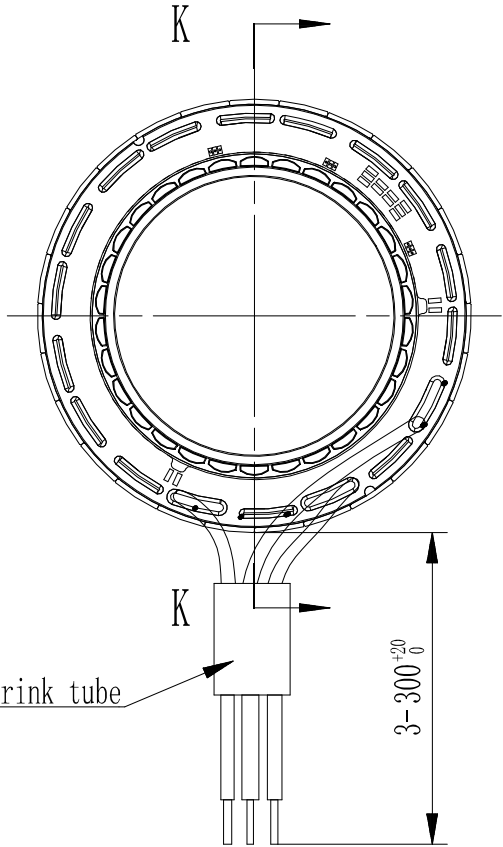


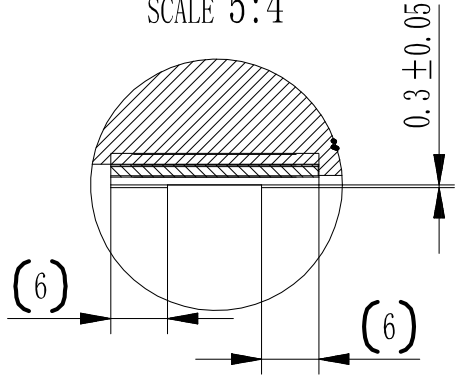
REV	DATE	DESCRIPTION	BY
00	20251031	INITIAL RELEASE	LIU JIN

115ZWC37X-1

DINGS' MOTION DATE CODE



DETAIL L
SCALE 5:4



NOTES:

- The peak torque in the list is based on the steady state test of the motor at room temperature;
- The motor performance parameters in the list are based on the open-loop drive of Dingzhi Company.

RATED VOLTAGE	VDC	48	DIELECTRICAL STRENGTH	1200V 50Hz 1s 3mA
RATED TORQUE	N·m	3.9	INSULATION RESISTANCE	50MΩm 20℃
RATED SPEED	RPM	1400 ± 10%	MOUNTING TYPE	-
RATED CURRENT	A	14.1 ± 10%	DUTY TYPE	S2
RATED POWER	W	570	COOLING TYPE	IC410
PEAK TORQUE	N·m	12.7	PROTECTION GRADE	IP00
POLE PAIRS	-	15	INSULATION CLASS	F
WEIGHT	g	1070 (REF)	ROTOR INERTIA	3.93 kgcm ² (REF)

CUSTOMER		Motor Lead wires			
<div>U</div> <div>V</div> <div>W</div>		UL1332	PHASE U	YELLOW	
		14AWG	PHASE V	RED	
			PHASE W	BLACK	

THIS DRAWING IS ONLY CONDITIONALLY ISSUED, AND FOR THE SOLE PURPOSE OF INFORMING LICENSEES AND ASSOCIATE CONTRACTORS OF DINGS' MOTION, AND VENDORS THEREOF AND CUSTOMERS THEREOF, RECEIPT OR POSSESSION THEREOF DOES NOT CONFER TO TRANSFER ANY RIGHT IN THE SUBJECT MATTER OF THE DRAWING. THE DESIGN, CONSTRUCTION, TECHNICAL INFORMATION AND ALL OTHER SUBJECT MATTER IN THIS DRAWING ARE AND REMAIN, EXCEPT AS MAY BE OTHERWISE INDICATED BY WRITTEN NOTICE HEREON, THE EXCLUSIVE PROPERTY OF SAID CORPORATION. THIS DRAWING MAY BE REPRODUCED ONLY BY LICENSEES AND ASSOCIATE CONTRACTORS OF SAID CORPORATION AND ONLY FOR LICENSED MANUFACTURE, AND BY VENDORS MANUFACTURING FOR SAID CORPORATION AND ONLY FOR LICENSEES AND ASSOCIATE CONTRACTORS.					
UNLESS OTHERWISE SPECIFIED ALL DIMENSIONS ARE IN MILLIMETERS AND TOLERANCES ARE AS BELOW		DRWN	LIU JIN	DATE	20251031
LINEAR		APRV		DATE	
0 - 3	±0.2	0 - 10	±1.5°	115ZWC37X-1	
3 - 6	±0.5	10 - 50	±1°		
6 - 30	±1	50 - 120	±0.5°		
30 - 120	±2	120 - 400	±0.25°		
				SIZE	A4
				SCALE	1:1

DINGS' 鼎智

